

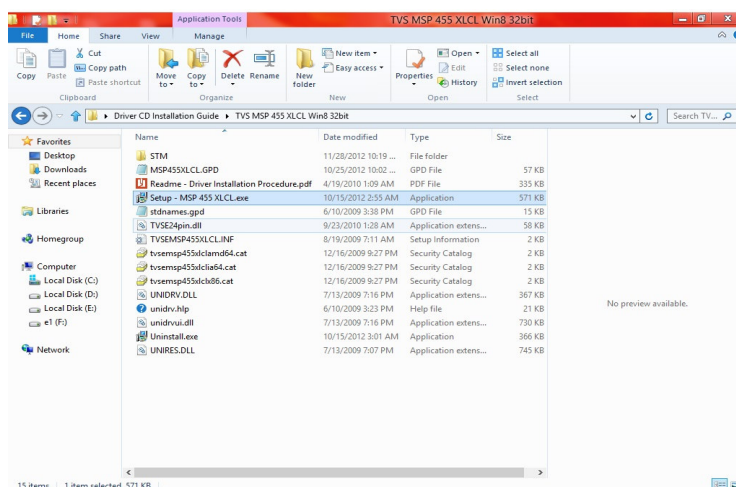
## Scope: Driver Installation Procedure for TVSE MSP Series (9wire & 24wire printers)

### TVSE MSP Series - Driver Software Installation / Un-installation Procedure (Windows 8)

### Installation Procedure

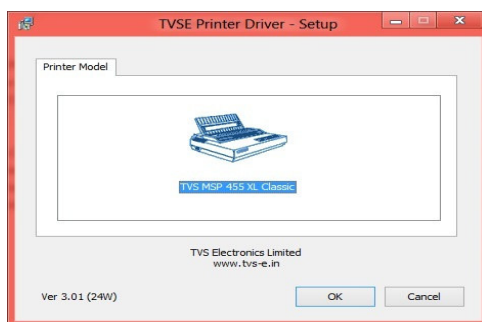
#### Step: 1

- Run the Printer Setup Utility, for example "Setup – MSP 455 XLCL.exe"
- Click "Yes" for "User Account Control" Permission.



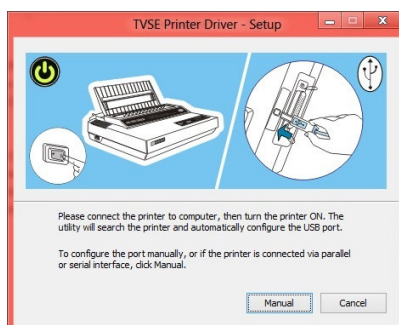
#### Step: 2

- Click Ok button



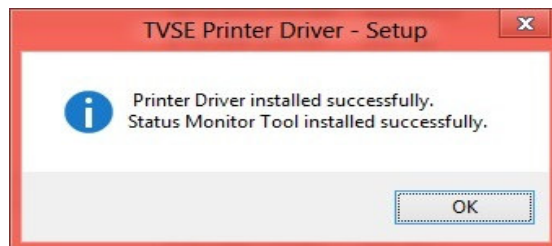
#### Step: 3

- The below search window will appear, in case of USB; connect the USB cable to the PC and Printer then switch ON the printer.
- If the printer is already switched ON, unplug the USB cable and plug in once again.
- For Parallel & Serial interface click "Manual" button

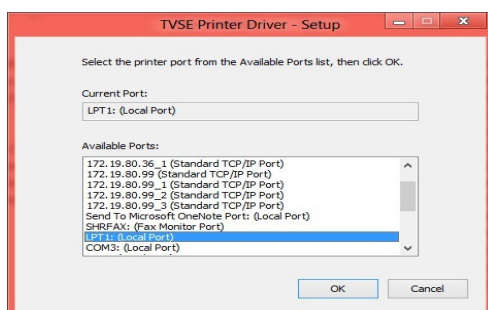


#### Step: 4

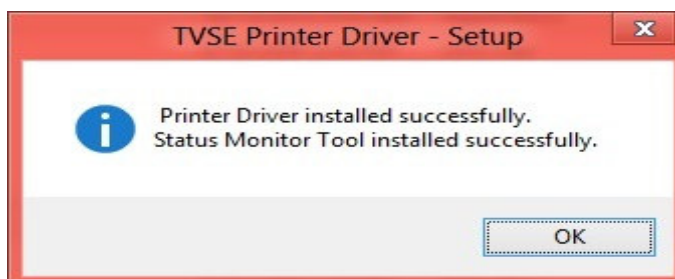
- For USB, the software will automatically search the USB Port and install the drive.
- Click Ok to complete the installation Process



- For Parallel and Serial port choose the required port and click OK button.
- By default "LPT1" port will be selected.



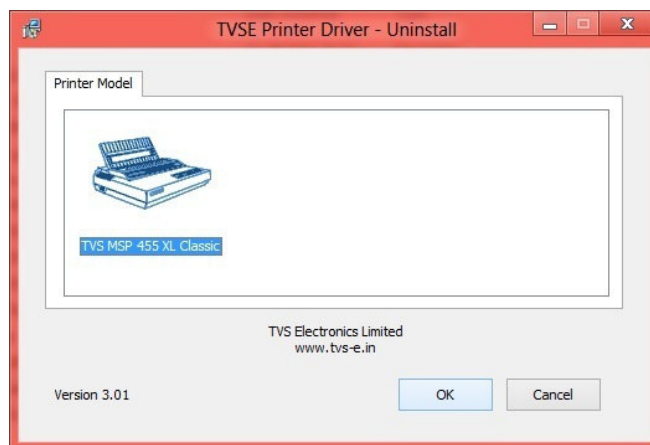
Click Ok to complete the installation Process.



## Un-Installation Procedure

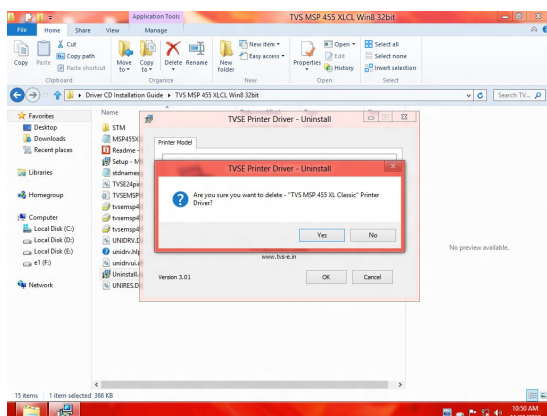
### Step: 1

- Run the Uninstall.exe and double Click the Icon to un-install the driver



### Step: 2

- Click "Yes" to continue deleting the printer, if not click "No" to cancel the process



Click "Ok" to complete the process.

